



Showcase
Display
Collection

展示柜

Showcase Display Collection 展示柜

General Features

03 High quality imported Compressor, energy saving and low noise
采用优质进口压缩机，节能并且降低噪音。

04 Baked castors for easy moving
万向脚轮方便移动。

07 ITO toughened heated glass, anti condensation and energy saving and good visual effect
ITO 钢化玻璃，防凝露节能，视觉效果好。

08 Improved forced air cooling system ensure effective air circulation
改进的强制风冷系统保证了有效的空气循环。

09 Water storage device under the rear air grill, and the speed of evaporator fan is adjustable, which can ensure the suitable humidity for food
贮水装置置于后风格栅下，蒸发器风扇转速可调，可保证食物的适宜湿度。

10 Automatic defrost ensure the evaporator working to its optimum performance. Automatic vaporizing the defrosted water
自动除霜确保蒸发器达到最佳性能。自动除霜蒸发达到最佳性能。

11 EBM condenser fan motor
EBM冷凝器风扇自动循环。

13 Black/ white man made marble and #304 Stainless steel finished exterior decoration for choice, beautiful and practical
黑色 / 白色人造大理石和 # 304 不锈钢成品外观装饰，美观实用。

14 Voltage and cycles upon request
电源电压可选。

12



Ventilation grill can be hung on via a hook, easy to remove and good for maintenance
可通过挂钩悬挂，便于拆卸，便于维修。



01 LED light in illumination, avoiding glaring
LED 照明，避免刺眼。



02 Accurate digital controller, precise working temperature display
精确的数字控制器，准确显示工作温度。



05 Improved door track, with high quality imported bearing, low noise and smooth
改进的门轨，进口优质轴承，噪音低，光滑。



06 Independent electronic board and cooling system, can be easily taken out for maintenance or replacement
独立的电器板和制冷系统，易于维修和更换。

Royal-Kincool® Showcase Display Collection

Floor Standing Showcase Refrigerator

落地式西饼展示柜

Product List



Floor Standing Showcase Refrigerator

落地式西饼展示柜



Technical Data

Model 型号	NLR730V	NLR740V	NLR750V	NLR760V	NLR780V	NLR830V	NLR840V	NLR850V	NLR860V	NLR880V
Temp Range 温度范围	+2~+8°C									
External Dimension (mm) 外形尺寸										
Width 长	900	1200	1500	1800	2400	900	1200	1500	1800	2400
Depth 宽	680					800				
Height 高	1000					1000				
Packing Size (mm) 包装尺寸										
Length 长	970	1270	1570	1870	2470	970	1270	1570	1870	2470
Width 宽	750					870				
Height 高	1130					1130				
Weight (kgs) 重量										
Net weight 净重	153	190	222	255	291	171	210	245	275	314
Gross weight 毛重	181	224	261	300	346	202	247	287	323	372
Shelves 层板										
Quantity 数量	2									
Material 材质	Glass									
Door opening direction 开门方式										
Back sliding door										
Capacity (cu.ft / liters) 容积	190	260	325	395	530	235	315	400	480	645
Power supply 电源										
220V,50/60HZ (110V,60HZ)										
Power Input - Running (amps) 电流	3.8	4.3	4.4	4.8	7.8	3.8	4.3	4.4	4.8	7.8
Rating Power (watts) 功率	664	758	781	847	1372	664	758	781	847	1372
Compressor (HP) 压缩机	3/8	1/2	1/2	5/8	7/8	3/8	1/2	1/2	5/8	7/8
Maximum loading height of shelves (mm per shelf) 层板最高装载高度										
Upper Shelf 上层板	200									
Lower Shelf 底层板	195									
Refrigerant 制冷剂										
Type 类型	R134a				R404a	R134a				R404a
Weight (g) 灌注量	600	750	850	1000	800	600	750	850	1000	800
Standard fitting of LED 照明配置	2*10W	2*15W	2*20W	2*25W	4*15W	2*10W	2*15W	2*20W	2*25W	4*15W
Optional Material for outer decoration: 外装饰材质										
304# Stainless Steel, Man made marble										
Configuration: 配置										
Tempered ITO glass, LED light, Imported compressor										
Packing 包装										
Plywood Case, no need to be fumigated										
Shipping 装柜数量										
Qty/20'GP	36	26	20	18	12	28	22	14	12	8
Qty/40'GP	72	56	44	38	24	56	46	30	26	16
Qty/40'HQ	72	56	44	38	24	56	46	30	26	16

Optional Refrigerant : R290

Floor Standing Showcase Refrigerator

落地式西饼展示柜



Technical Data

Model 型号	NR730V	NR740V	NR750V	NR760V	NR780V	NR830V	NR840V	NR850V	NR860V	NR880V
Temp Range 温度范围	+2~+8°C									
External Dimension (mm) 外形尺寸										
Width 长	900	1200	1500	1800	2400	900	1200	1500	1800	2400
Depth 宽	680					800				
Height 高	1200					1200				
Packing Size (mm) 包装尺寸										
Length 长	970	1270	1570	1870	2470	970	1270	1570	1870	2470
Width 宽	750					870				
Height 高	1330					1330				
Weight (kgs) 重量										
Net weight 净重	174	215	254	291	331	194	234	279	314	356
Gross weight 毛重	204	251	297	340	391	227	273	325	366	419
Shelves 层板										
Quantity 数量	3									
Material 材质	Glass									
Door opening direction 开门方式										
Back sliding door										
Capacity (cu.ft / liters) 容积	285	385	485	585	790	350	470	595	715	965
Power supply 电源										
220V,50/60HZ (110V,60HZ)										
Power Input - Running (amps) 电流	4	4.6	4.7	5.1	8.3	4	4.6	4.7	5.1	8.3
Rating Power (watts) 功率	700	804	833	903	1458	700	804	833	903	1458
Compressor (HP) 压缩机	3/8	1/2	1/2	5/8	7/8	3/8	1/2	1/2	5/8	7/8
Maximum loading height of shelves (mm per shelf) 层板最高装载高度										
Upper Shelf 上层板	195									
Middle shelf 中层板	180									
Lower Shelf 底层板	195									
Refrigerant 制冷剂										
Type 类型	R134a				R404a	R134a				R404a
Weight (g) 灌注量	600	750	850	1000	800	600	750	850	1000	800
Standard fitting of LED 照明配置	3*10W	3*15W	3*20W	3*25W	6*15W	3*10W	3*15W	3*20W	3*25W	6*15W
Optional Material for outer decoration: 外装饰材质										
304# Stainless Steel, Man made marble										
Configuration: 配置										
Tempered ITO glass, LED light, Imported compressor										
Packing 包装										
Plywood Case, no need to be fumigated										
Shipping 装柜数量										
Qty/20'GP	18	13	10	9	6	14	11	7	6	4
Qty/40'GP	36	28	22	19	12	28	23	15	13	8
Qty/40'HQ	72	56	44	38	24	56	46	30	26	16

Optional Refrigerant : R290

Floor Standing Showcase Refrigerator

落地式西饼展示柜



Technical Data

Model 型号	NSR730V	NSR740V	NSR750V	NSR760V	NSR780V	NSR830V	NSR840V	NSR850V	NSR860V	NSR880V
Temp Range 温度范围	+2~+8°C									
External Dimension (mm) 外形尺寸										
Width 长	900	1200	1500	1800	2400	900	1200	1500	1800	2400
Depth 宽	680					800				
Height 高	1350					1350				
Packing Size (mm) 包装尺寸										
Length 长	970	1270	1570	1870	2470	970	1270	1570	1870	2470
Width 宽	750					870				
Height 高	1500					1500				
Weight (kgs) 重量										
Net weight 净重	196	239	280	319	361	218	264	307	344	388
Gross weight 总重	229	279	326	371	426	254	307	356	399	456
Shelves 层板										
Quantity 数量	4									
Material 材质	Glass									
Door opening direction 开门方向										
Back sliding door										
Capacity (cu.ft / liters) 容积	355	480	605	735	985	435	590	740	890	1200
Power supply 电源										
220V,50/60HZ (110V,60Hz)										
Power Input - Running (amps) 电流	4.2	4.8	5	5.4	8.6	4.2	4.8	5	5.4	8.6
Rating Power (watts) 功率	734	844	880	952	1517	734	844	880	952	1517
Compressor (HP) 压缩机	3/8	1/2	1/2	5/8	7/8	3/8	1/2	1/2	5/8	7/8
Maximum loading height of shelves (mm per shelf) 层板最高装载高度										
Upper Shelf 上层板	190									
Middle shelf 中层板	165									
Lower Shelf 下层板	165									
Bottom shelf 底层板	175									
Refrigerant 制冷剂										
Type 类型	R134a				R404a	R134a				R404a
Weight (g) 灌注量	600	750	850	1000	800	600	750	850	1000	800
Standard fitting of LED 照明配置	4*10W	4*15W	4*20W	4*25W	8*15W	4*10W	4*15W	4*20W	4*25W	8*15W
Optional Material for outer decoration: 外装饰材料										
304# Stainless Steel, Man made marble										
Configuration: 配置										
Tempered ITO glass, LED light, Imported compressor										
Packing 包装										
Plywood Case, no need to be fumigated										
Shipping 装柜数量										
Qty/20'GP	18	13	10	9	6	14	11	7	6	4
Qty/40'GP	36	28	22	19	12	28	23	15	13	8
Qty/40'HQ	36	28	22	19	12	28	23	15	13	8

Optional Refrigerant : R290

Floor Standing Showcase Refrigerator

落地式西饼展示柜



Technical Data

Model 型号	NGR730V	NGR740V	NGR750V	NGR760V	NGR780V	NGR830V	NGR840V	NGR850V	NGR860V	NGR880V
Temp Range 温度范围	+2~+8°C									
External Dimension (mm) 外形尺寸										
Width 长	900	1200	1500	1800	2400	900	1200	1500	1800	2400
Depth 宽	680					800				
Height 高	1500					1500				
Packing Size (mm) 包装尺寸										
Length 长	970	1270	1570	1870	2470	970	1270	1570	1870	2470
Width 宽	750					870				
Height 高	1630					1630				
Weight (kgs) 重量										
Net weight 净重	211	256	298	337	378	235	283	327	364	401
Gross weight 总重	246	299	347	393	448	273	329	379	423	480
Shelves 层板										
Quantity 数量	4									
Material 材质	Glass									
Door opening direction 开门方式										
Back sliding door										
Capacity (cu.ft / liters) 容积	430	580	730	880	1180	520	700	890	1070	1435
Power supply 电源										
220V,50/60HZ (110V,60HZ)										
Power Input - Running (amps) 电流	4.3	4.9	5.2	5.6	8.9	4.3	4.9	5.2	5.6	8.9
Rating Power (watts) 功率	757	868	907	983	1563	757	868	907	983	1563
Compressor (HP) 压缩机	3/8	1/2	1/2	5/8	7/8	3/8	1/2	1/2	5/8	7/8
Maximum loading height of shelves (mm per shelf) 层板最高装载高度										
Upper Shelf 上层板	230									
Middle shelf 中层板	200									
Lower Shelf 下层板	200									
Bottom shelf 底层板	210									
Refrigerant 制冷剂										
Type 类型	R134a				R404a	R134a				R404a
Weight (g) 灌注量	600	750	850	1000	800	600	750	850	1000	800
Standard fitting of LED 照明配置	4*10W	4*15W	4*20W	4*25W	8*15W	4*10W	4*15W	4*20W	4*25W	8*15W
Optional Material for outer decoration: 外装饰材料										
304# Stainless Steel, Man made marble										
Configuration: 配置										
Tempered ITO glass, LED light, Imported compressor										
Packing 包装										
Plywood Case, no need to be fumigated										
Shipping 装柜数量										
Qty/20'GP	18	13	10	9	6	14	11	7	6	4
Qty/40'GP	36	28	22	19	12	28	23	15	13	8
Qty/40'HQ	36	28	22	19	12	28	23	15	13	8

Optional Refrigerant : R290

Floor Standing Showcase Refrigerator

Product List 落地式西饼展示柜

NR7A/NR8A



NSR7A/NSR8A



Floor Standing Showcase Refrigerator

落地式西饼展示柜



Technical Data

Model 型号	NR730A	NR740A	NR750A	NR760A	NR780A	NR830A	NR840A	NR850A	NR860A	NR880A
Temp Range 温度范围	+2~+8°C									
External Dimension (mm) 外形尺寸										
Width 长	900	1200	1500	1800	2400	900	1200	1500	1800	2400
Depth 宽	680					800				
Height 高	1200					1200				
Packing Size (mm) 包装尺寸										
Length 长	970	1270	1570	1870	2470	970	1270	1570	1870	2470
Width 宽	750					870				
Height 高	1330					1330				
Weight (kgs) 重量										
Net weight 净重	163	200	236	270	314	183	220	260	293	330
Gross weight 毛重	193	234	279	319	364	216	260	307	345	392
Shelves 层板										
Quantity 数量	3									
Material 材质										
Glass										
Door opening direction 开门方式										
Back sliding door										
Capacity (cu.ft / liters) 容积	230	310	390	470	630	300	405	510	610	820
Power supply 电源										
220V,50/60HZ (110V,60HZ)										
Power Input -Running (amps) 电流	4.1	4.7	4.8	5.3	8.1	4.1	4.7	4.8	5.3	8.1
Rating Power (watts) 功率	720	830	850	925	1420	720	830	850	925	1420
Compressor (HP) 压缩机	3/8	1/2	1/2	5/8	7/8	3/8	1/2	1/2	5/8	7/8
Maximum loading height of shelves (mm per shelf) 层板最高装载高度										
Upper Shelf 上层板	195									
Middle shelf 中层板	180									
Lower Shelf 下层板	195									
Refrigerant 制冷剂										
Type 类型	R134a				R404a	R134a				R404a
Weight (g) 灌注量	600	750	850	1000	800	600	750	850	1000	800
Standard fitting of LED 照明配置	3*10W	3*15W	3*20W	3*25W	6*15W	3*10W	3*15W	3*20W	3*25W	6*15W
Optional Material for outer decoration: 外装饰材质										
304# Stainless Steel, Man made marble										
Configuration: 配置										
Tempered ITO glass, LED light, Imported compressor										
Packing 包装										
Plywood Case, no need to be fumigated										
Shipping 装柜数量										
Qty/20'GP	18	13	10	9	6	14	11	7	6	4
Qty/40'GP	36	28	22	19	12	28	23	15	13	8
Qty/40'HQ	36	28	22	19	12	28	23	15	13	8

Optional Refrigerant : R290

Floor Standing Showcase Refrigerator

落地式西饼展示柜



Technical Data

Model 型号	NSR730A	NSR740A	NSR750A	NSR760A	NSR780A	NSR830A	NSR840A	NSR850A	NSR860A	NSR880A
Temp Range 温度范围	+2~+8°C									
External Dimension (mm) 外形尺寸										
Width 长	900	1200	1500	1800	2400	900	1200	1500	1800	2400
Depth 宽	680					800				
Height 高	1370					1370				
Packing Size (mm) 包装尺寸										
Length 长	970	1270	1570	1870	2470	970	1270	1570	1870	2470
Width 宽	750					870				
Height 高	1500					1500				
Weight (kgs) 重量										
Net weight 净重	186	226	263	300	336	208	250	290	324	363
Gross weight 毛重	219	266	310	351	400	244	294	340	379	430
Shelves 层板										
Quantity 数量	4									
Material 材质										
	Glass									
Door opening direction 开门方式										
	Back sliding door									
Capacity (cu.ft / liters) 容积	300	405	510	610	820	370	510	640	770	1030
Power supply 电源										
	220V,50/60HZ(110V,60HZ)									
Power Input - Running (amps) 电流	4.3	5	5.1	5.5	8.7	4.3	5	5.1	5.5	8.7
Rating Power (watts) 功率	760	875	890	975	1540	760	875	890	975	1540
Compressor (HP) 压缩机	3/8	1/2	1/2	5/8	7/8	3/8	1/2	1/2	5/8	7/8
Maximum loading height of shelves (mm per shelf) 层板最高装载高度										
Upper Shelf 上层板	190									
Middle shelf 中层板	165									
Lower Shelf 下层板	165									
Bottom shelf 底层板	175									
Refrigerant 制冷剂										
Type 类型	R134a				R404a	R134a				R404a
Weight (g) 灌注量	600	750	850	1000	800	600	750	850	1000	800
Standard fitting of LED 照明配置	4*10W	4*15W	4*20W	4*25W	8*15W	4*10W	4*15W	4*20W	4*25W	8*15W
Optional Material for outer decoration: 外装饰材料										
	304# Stainless Steel, Man made marble									
Configuration: 配置										
	Tempered ITO glass, LED light, Imported compressor									
Packing 包装										
	Plywood Case, no need to be fumigated									
Shipping 装柜数量										
Qty/20'GP	18	13	10	9	6	14	11	7	6	4
Qty/40'GP	36	28	22	19	12	28	23	15	13	8
Qty/40'HQ	36	28	22	19	12	28	23	15	13	8

Optional Refrigerant : R290

Floor Standing Showcase Refrigerator

Product List 落地式西饼展示柜

NK7A/NK8A



NSK7A/NSK8A



Floor Standing Showcase Refrigerator

落地式西饼展示柜



Technical Data

Model 型号	NK730A	NK740A	NK750A	NK760A	NK780A	NK830A	NK840A	NK850A	NK860A	NK880A		
Temp Range 温度范围	+2~+8°C											
External Dimension (mm) 外形尺寸												
Width 长	900	1200	1500	1800	2400	900	1200	1500	1800	2400		
Depth 宽	680					800						
Height 高	1200					1200						
Packing Size (mm) 包装尺寸												
Length 长	970	1270	1570	1870	2470	970	1270	1570	1870	2470		
Width 宽	750					870						
Height 高	1330					1330						
Weight (kgs) 重量												
Net weight 净重	163	200	236	270	314	183	220	260	293	330		
Gross weight 毛重	193	234	279	319	364	216	260	307	345	392		
Shelves 层板												
Quantity 数量	3											
Material 材质	Glass											
Door opening direction 开门方式												
Back sliding door												
Capacity (cu.ft / liters) 容积	250	330	410	492	650	320	425	530	630	840		
Power supply 电源												
220V,50/60HZ (110V,60HZ)												
Power Input - Running (amps) 电流	4.1	4.7	4.8	5.3	8.1	4.1	4.7	4.8	5.3	8.1		
Rating Power (watts) 功率	720	830	850	925	1420	720	830	850	925	1420		
Compressor (HP) 压缩机	3/8	1/2	1/2	5/8	7/8	3/8	1/2	1/2	5/8	7/8		
Maximum loading height of shelves (mm per shelf) 层板最高装载高度												
Upper Shelf 上层板	195											
Middle shelf 中层板	180											
Lower Shelf 下层板	195											
Refrigerant 制冷剂												
Type 类型	R134a					R404a	R134a					R404a
Weight (g) 灌注量	600	750	850	1000	800	600	750	850	1000	800		
Standard fitting of LED 照明配置	3*10W	3*15W	3*20W	3*25W	6*15W	3*10W	3*15W	3*20W	3*25W	6*15W		
Optional Material for outer decoration: 外装饰材料												
304# Stainless Steel, Man made marble												
Configuration: 配置												
Tempered ITO glass, LED light, Imported compressor												
Packing 包装												
Plywood Case, no need to be fumigated												
Shipping 装柜数量												
Qty/20'GP	18	13	10	9	6	14	11	7	6	4		
Qty/40'GP	36	28	22	19	12	28	23	15	13	8		
Qty/40'HQ	36	28	22	19	12	28	23	15	13	8		

Optional Refrigerant : R290

Floor Standing Showcase Refrigerator

落地式西饼展示柜



Technical Data

Model 型号	NSK730A	NSK740A	NSK750A	NSK760A	NSK780A	NSK830A	NSK840A	NSK850A	NSK860A	NSK880A		
Temp Range 温度范围	+2~+8°C											
External Dimension (mm) 外形尺寸												
Width 长	900	1200	1500	1800	2400	900	1200	1500	1800	2400		
Depth 宽	680					800						
Height 高	1370					1370						
Packing Size (mm) 包装尺寸												
Length 长	970	1270	1570	1870	2470	970	1270	1570	1870	2470		
Width 宽	750					870						
Height 高	1500					1500						
Weight (kgs) 重量												
Net weight 净重	186	226	263	300	336	208	250	290	324	363		
Gross weight 毛重	219	266	310	351	400	244	294	340	379	430		
Shelves 层板												
Quantity 数量	4											
Material 材质	Glass											
Door opening direction 开门方式												
Back sliding door												
Capacity (cu.ft / liters) 容积	320	425	530	630	850	390	530	660	785	1045		
Power supply 电源												
220V,50/60HZ (110V,60HZ)												
Power Input - Running (amps) 电流	4.3	5	5.1	5.5	8.7	4.3	5	5.1	5.5	8.7		
Rating Power (watts) 功率	760	875	890	975	1540	760	875	890	975	1540		
Compressor (HP) 压缩机	3/8	1/2	1/2	5/8	7/8	3/8	1/2	1/2	5/8	7/8		
Maximum loading height of shelves (mm per shelf) 层板最高装载高度												
Upper Shelf 上层板	190											
Middle shelf 中层板	165											
Lower Shelf 下层板	165											
Bottom shelf 底层板	175											
Refrigerant 制冷剂												
Type 类型	R134a					R404a	R134a					R404a
Weight (g) 灌注量	600	750	850	1000	800	600	750	850	1000	800		
Standard fitting of LED 照明配置	4*10W	4*15W	4*20W	4*25W	8*15W	4*10W	4*15W	4*20W	4*25W	8*15W		
Optional Material for outer decoration: 外装饰材料												
304# Stainless Steel, Man made marble												
Configuration: 配置												
Tempered ITO glass, LED light, Imported compressor												
Packing 包装												
Plywood Case, no need to be fumigated												
Shipping 装柜数量												
Qty/20'GP	18	13	10	9	6	14	11	7	6	4		
Qty/40'GP	36	28	22	19	12	28	23	15	13	8		
Qty/40'HQ	36	28	22	19	12	28	23	15	13	8		

Optional Refrigerant : R290

Floor Standing Showcase Refrigerator

Product List 落地式西饼展示柜

NSG7A/NSG8A



Floor Standing Showcase Refrigerator

落地式西饼展示柜



Technical Data

Model 型号	NSG730A	NSG740A	NSG750A	NSG760A	NSG780A	NSG830A	NSG840A	NSG850A	NSG860A	NSG880A
Temp Range 温度范围	+2~+8℃									
External Dimension (mm) 外形尺寸										
Width 长	900	1200	1500	1800	2400	900	1200	1500	1800	2400
Depth 宽	680					800				
Height 高	1370					1370				
Packing Size (mm) 包装尺寸										
Length 长	970	1270	1570	1870	2470	970	1270	1570	1870	2470
Width 宽	750					870				
Height 高	1500					1500				
Weight (kgs) 重量										
Net weight 净重	200	240	278	315	350	218	260	300	334	373
Gross weight 毛重	230	275	315	360	410	250	294	340	382	433
Shelves 层板										
Quantity 数量	4									
Material 材质										
Glass										
Door opening direction 开门方式										
Back sliding door										
Capacity (cu.ft / liters) 容积	320	425	530	630	850	390	530	660	785	1045
Power supply 电源										
220V,50/60HZ(110V,60HZ)										
Power Input-Running (amps) 电流	4.3	5	5.1	5.5	8.7	4.3	5	5.1	5.5	8.7
Rating Power (watts) 功率	760	875	890	975	1540	760	875	890	975	1540
Compressor (HP) 压缩机	3/8	1/2	1/2	5/8	7/8	3/8	1/2	1/2	5/8	7/8
Maximum loading height of shelves (mm per shelf) 层板最高装载高度										
Upper Shelf 上层板	190									
Middle shelf 中层板	165									
Lower Shelf 下层板	165									
Bottom shelf 底层板	175									
Refrigerant 制冷剂										
Type 类型	R134a				R404a	R134a				R404a
Weight (g) 灌注量	500	840	1000	1050	800	500	840	1000	1050	800
Standard fitting of LED 照明配置	4*10W	4*15W	4*20W	4*25W	8*15W	4*10W	4*15W	4*20W	4*25W	8*15W
Optional Material for outer decoration: 外装饰材料										
304# Stainless Steel, Man made marble										
Configuration: 配置										
Tempered ITO glass, LED light, Imported compressor										
Packing 包装										
Plywood Case, no need to be fumigated										
Shipping 装柜数量										
Qty/20'GP	18	13	10	9	6	14	11	7	6	4
Qty/40'GP	36	28	22	19	12	28	23	15	13	8
Qty/40'HQ	36	28	22	19	12	28	23	15	13	8

Optional Refrigerant : R290

Super Structure Showcase Refrigerator

Product List 子母展示柜

GS8VBF



Super Structure Showcase Refrigerator

子母展示柜

Technical Data

Model 型号	GS840VBF	GS850VBF	GS860VBF
Temp Range 温度	+2~+8 °C / +8~+14 °C		
External Dimension (mm) 外形尺寸			
Width 长	1200	1500	1800
Depth 宽	880		
Height 高	1350		
Packing Size (mm) 包装尺寸			
Length 长	1270	1570	1870
Width 宽	950		
Height 高	1480		
Weight (kgs) 重量			
Net weight 净重	260	300	350
Gross weight 毛重	300	345	400
Shelves 层板			
Quantity 数量	3		
Material 材质	Glass		
Door opening direction 开门方式	Back sliding door		
Capacity (cu.ft / liters) 容积	220+170	285+220	340+270
Power supply 电源	220V,50/60HZ(110V,60HZ)		
Power Input - Running (amps) 电流			
Rating Power (watts) 功率			
Compressor (HP) 压缩机	5/8	3/4	7/8
Maximum loading height of shelves (mm per shelf) 层板最高承载高度			
Upper shelf 上层板	160		
Lower shelf 下层板	160		
Bottom shelf 底层板	180		
Refrigerant 制冷剂			
Type 类型	R404a	R404a	R404a
Weight (g) 灌注量	1000	800	1050
Standard fitting of light 照明配置	LED 3*15W	LED 3*20W	LED 3*25W
Optional Material for outer decoration 外装饰材质	304# Stainless Steel, Man made marble		
Configuration 配置	ITO glass, LED light, Imported compressor		
Packing 包装	Plywood Case, no need to be fumigated		
Shipping 装柜数量			
Qty/20'GP	10	7	6
Qty/40'GP	21	15	12
Qty/40'HQ	21	15	12

Optional Refrigerant : R290

Corner Showcase Refrigerator

Product List 转角柜

NLC7L



Corner Showcase Refrigerator

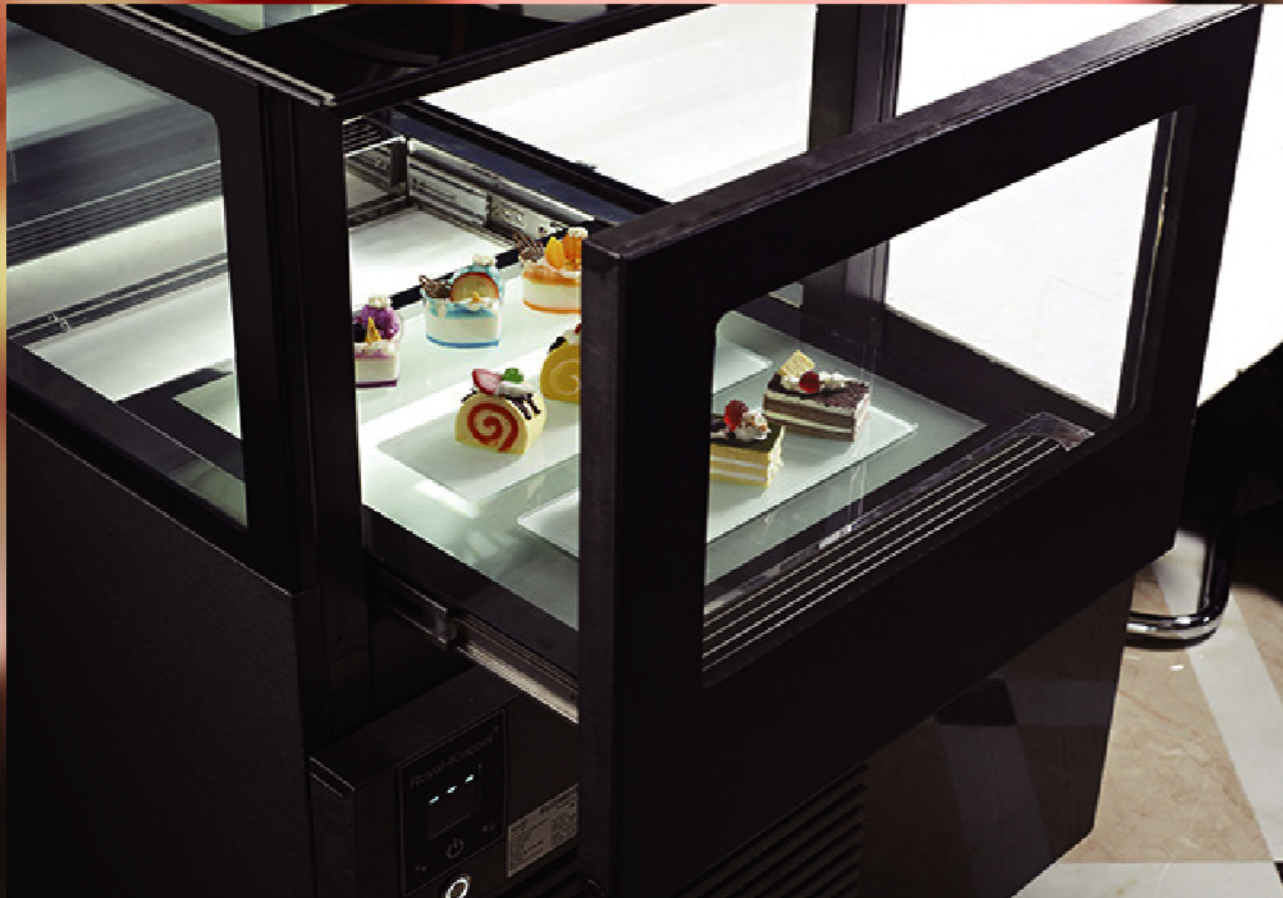
转角柜

Technical Data

Model 型号	NLC7L160+160	NLC8L170+170
Temp Range 温度	+2~+8 °C	
External Dimension (mm) 外部尺寸		
Width 长	1600+1600	1700+1700
Depth 宽	680	800
Height 高	1000	1000
Packing Size (mm) 包装尺寸		
Length 长	1760	1870
Width 宽	1760	1770
Height 高	1400	1400
Weight (kgs) 重量		
Net weight 净重	370	435
Gross weight 毛重	436	512
Shelves 层板		
Quantity 数量	2	
Material 材质	Glass	
Door opening direction 开门方式	Back sliding door	
Capacity (cu.ft / liters) 容积	520	630
Power supply 电源	220V,50/60HZ(110V,60HZ)	
Power Input - Running (amps) 电流	4.4	5.1
Rating Power (watts) 功率	772	896
Compressor (HP) 压缩机	3/8	3/8
Refrigerant 制冷剂		
Type 类型	R134a	
Weight (g) 灌注量		
Standard fitting of light 照明配置	LED 4*10W/2*6W	LED 4*10W/2*6W
Optional Material for outer decoration 外装饰材质		
	304# Stainless Steel, Man made marble	
Configuration 配置		
	ITO glass, LED light, Imported compressor	
Packing 包装	Plywood Case, no need to be fumigated	
Shipping 装柜数量		
Qty/20'GP	3	3
Qty/40'GP	6	6
Qty/40'HQ	6	6

Showcase Refrigerator with Drawer 抽屉展示柜

Product List



Showcase Refrigerator with Drawer 抽屉展示柜



Technical Data

Model 型号	P720VT1	P740VT2	E850VT2
Temp Range 温度范围	+2~+8 °C		
External Dimension (mm) 外形尺寸			
Width 长	600	1200	1500
Depth 宽	700		800
Height 高	1200		
Packing Size (mm) 包装尺寸			
Length 长	660	1260	1560
Width 宽	760	760	860
Height 高	1375		
Weight (kgs) 重量			
Net weight 净重	100	150	200
Gross weight 毛重	140	175	230
Drawer 抽屉			
Quantity 数量	1	2	2
Maximum loading height of drawer (mm) 抽屉的最高装载高度	300		
Drawer opening direction 开门方式	Back drawer		
Capacity (cu.ft / liters) 容积	134L	208L	272L
Power supply 电源	220~240V/50(110V/60Hz, 220V/60Hz)		
Power Input - Running (amps) 电流	2.5	2.9	3
Rating Power (watts) 功率	320	380	410
Compressor (HP) 压缩机	1/3	1/3	3/8
Refrigerant 制冷剂			
Type 类型	R134a	R134a	R134a
Weight (g) 灌注量	250g	350g	600g
Standard fitting of light 照明配置	LED light		
Optional Material for outer decoration 外装饰材料	304 Snowflake /Abrasive Finish BlackTitanium/ Mirror Stainless Steel		
Packing 包装	Plywood Case, no need to be fumigated		
Shipping 装柜数量			
Qty/20'GP	24	12	7
Qty/40'GP	54	27	15
Qty/40'HQ	54	27	15

Optional Refrigerant : R290



台式蛋糕展示柜 Countertop Showcase Refrigerator & Warmer

Key Features

1. Middle or high back pressure hermetic compressor. Low energy consumption
中高背压封闭式压缩机，节能安全
2. Accurate touch screen digital controller, precisely control the working temperature
高精度轻触式电子温控器，精确控制柜内温度
3. Double glazed safety glass with heater inside is suitable for all climates anti condensation
中空夹胶安全发热玻璃，安全系数高，在高温环境下不结雾，保证可视度
4. Adjustable shelves
层架高度可自由调节，清洁方便
5. Forced air cooling system ensures effective air circulation
强制风冷循环系统，制冷速度快，温度均匀
6. Automatic defrost ensures the evaporator working to its optimum performance
Automatic vaporizing the defrosted water
自动化霜系统，化霜水自动蒸发
7. Environment-friendly CFC-free Refrigerant R134a or R290
采用R134a或R290制冷剂，无氟环保
8. Voltage and cycles upon request
电源电压、频率可供客户选择
9. Warmer or refrigerator upon request
按要求可实现单冷或单热功能，制热温度达40-75°C

Royal-Kincool® Showcase Display Collection

Countertop Showcase Refrigerator & Warmer

台式蛋糕展示柜



Technical Data

Model 型号	A530V	A540V	A550V	H-A530V	H-A540V	H-A550V
Temp Range 温度范围	+2~+8 °C			+40~+75 °C		
External Dimension (mm) 外形尺寸						
Width 长	900	1200	1500	900	1200	1500
Depth 宽	540					
Height 高	790					
Packing Size (mm) 包装尺寸						
Length 长	950	1250	1550	950	1250	1550
Width 宽	590					
Height 高	940					
Weight (kgs) 重量						
Net weight 净重	102	122	145	80	100	120
Gross weight 毛重	119	140	162	99	120	142
Shelves 层板						
Quantity 数量	2					
Material 材质	stainless steel					
Door opening direction 开门方式						
back sliding door						
Capacity (cu.ft / liters) 容积						
	140	190	240	140	190	240
Power supply 电源						
220~240V/50(110V/60Hz, 220V/60Hz)						
Power Input - Running (amps) 电流						
	3.21	4.35	4.62	3.42	3.6	3.78
Rating Power (watts) 功率						
	443	601	638	752	795	832
Compressor (HP) 压缩机						
	1/5+	1/4	1/4	/		
Maximum loading height of shelves (mm per shelf) 层板最高装载高度						
Bottom shelf 底层板	165					
Top shelf 顶层板	169					
Refrigerant 制冷剂						
Type 类型	R134a			/		
Weight (g) 灌注量	350	380	380	/		
Standard fitting of light 照明配置						
	LED 2*10W	LED 2*15W	LED 2*20W	6*20W Halogen lamps	8*20W Halogen lamps	10*20W Halogen lamps
Packing 包装						
Plywood Case, no need to be fumigated						
Shipping 装柜数量						
Qty/20'GP	48	34	26	48	34	26
Qty/40'GP	96	72	58	96	72	58
Qty/40'HQ	96	72	58	96	72	58

Optional Refrigerant : R290

Countertop Showcase Refrigerator & Warmer

台式蛋糕展示柜



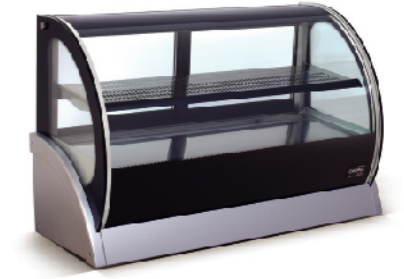
Technical Data

Model 型号	GA530V	GA540V	GA550V	H-GA530V	H-GA540V	H-GA550V
Temp Range 温度范围	+2~+8 °C			+40~+75 °C		
External Dimension (mm) 外形尺寸						
Width 长	900	1200	1500	900	1200	1500
Depth 宽	540					
Height 高	940					
Packing Size (mm) 包装尺寸						
Length 长	950	1250	1550	950	1250	1550
Width 宽	590					
Height 高	1090					
Weight (kgs) 重量						
Net weight 净重	117	149	172	98	126	154
Gross weight 毛重	140	170	199	121	152	179
Shelves 层板						
Quantity 数量	3					
Material 材质	stainless steel					
Door opening direction 开门方式	back sliding door					
Capacity (cu.ft / liters) 容积	190	260	330	190	260	330
Power supply 电源	220~240V/50(110V/60Hz, 220V/60Hz)					
Power Input - Running (amps) 电流	3.8	4.9	5.2	3.69	3.96	4.24
Rating Power (watts) 功率	527	673	716	814	874	934
Compressor (HP) 压缩机	3/8	1/2	1/2	/		
Maximum loading height of shelves (mm per shelf) 层板最高装载高度						
bottom shelf 底层板	135					
Middle shelf 中层板	175					
Top shelf 顶层板	165					
Refrigerant 制冷剂						
Type 类型	R134a					
Weight (g) 灌注量	420	450	450	/		
Standard fitting of light 照明配置	LED 3*10W	LED 3*15W	LED 3*20W	9*20W Halogen lamps	12*20W Halogen lamps	15*20W Halogen lamps
Packing 包装	Plywood Case, no need to be fumigated					
Shipping 装柜数量						
Qty/20'GP	48	34	26	48	34	26
Qty/40'GP	96	72	58	96	72	58
Qty/40'HQ	96	72	58	96	72	58

Optional Refrigerant : R290

Countertop Showcase Refrigerator & Warmer

台式蛋糕展示柜



Technical Data

Model 型号	S530A	S540A	S550A	H-S530A	H-S540A	H-S550A
Temp Range 温度范围	+2~+8 °C			+40~+75 °C		
External Dimension (mm) 外形尺寸						
Width 长	900	1200	1500	900	1200	1500
Depth 宽	540					
Height 高	790					
Packing Size (mm) 包装尺寸						
Length 长	950	1250	1550	950	1250	1550
Width 宽	590					
Height 高	940					
Weight (kgs) 重量						
Net weight 净重	95	115	136	80	99	118
Gross weight 毛重	112	134	157	97	119	141
Shelves 层板	2					
Quantity 数量	stainless steel					
Material 材质	back sliding door					
Door opening direction 开门方式						
Capacity (cu.ft / liters) 容积	115	155	200	115	155	200
Power supply 电源	220~240V/50(110V/60Hz, 220V/60Hz)					
Power Input - Running (amps) 电流	2.73	3.71	3.92	3.42	3.6	3.78
Rating Power (watts) 功率	377	513	542	752	805	932
Compressor (HP) 压缩机	1/5+	1/4	1/4	/		
Maximum loading height of shelves (mm per shelf) 层板最高装载高度						
Bottom shelf 底层板	170					
Top shelf 顶层板	170					
Refrigerant 制冷剂						
Type 类型	R134a					
Weight (g) 灌注量	350	380	380	/		
Standard fitting of light 照明配置	LED 2*10W	LED 2*15W	LED 2*20W	6*20W Halogen lamps	8*20W Halogen lamps	10*20W Halogen lamps
Packing 包装	Plywood Case, no need to be fumigated					
Shipping 装柜数量						
Qty/20'GP	48	34	26	48	34	26
Qty/40'GP	96	72	58	96	72	58
Qty/40'HQ	96	72	58	96	72	58

Optional Refrigerant : R290

Popsicle Showcase Freezer

Product List 冰棒展示柜



Gelator Showcase Freezer

Product List 落地式冰淇淋展示柜



Popsicle and Gelator Showcase Freezer

冰棒展示柜/落地式冰淇淋展示柜



Technical Data

Model 型号	PCE-120	PCE-150	PCE-180	PCE-120-G	PCE-150-G	PCE-180-G	ICE-100	ICE-120
Temp Range 温度范围	-18~-22 °C							
External Dimension (mm) 外形尺寸								
Width 长	1200	1500	1800	1200	1500	1800	1000	1200
Depth 宽	700			700			640	
Height 高	1150			1150			1150	
Packing Size (mm) 包装尺寸								
Length 长	1270	1570	1870	1270	1570	1870	1070	1270
Width 宽	770			770			710	
Height 高	1300			1300			1300	
Weight (kgs) 重量								
Net weight 净重	150	180	210	150	180	210	130	160
Gross weight 毛重	180	210	240	180	210	240	160	190
Popsicle Plug Disk/Transparent Acrylic 冰棍插盘 (透明亚克力)	GN pan							
Quantity 数量	2	3	3	6	7	9	5	6
Door opening direction 开门方式	Back sliding door							
Capacity (cu.ft / liters) 容积	260	340	430	52	60	77	43	52
Power supply 电源	220~240V/50(110V/60Hz, 220V/60Hz)							
Power Input - Running (amps) 电流	4.2	4.7	5.45	4.2	4.7	5.45	3.9	4.2
Rating Power (watts) 功率	690	835	980	690	835	980	600	690
Compressor (HP) 压缩机	3/4	3/4	7/8	3/4	3/4	7/8	3/4	3/4
Refrigerant 制冷剂								
Type 类型	R404A							
Weight (g) 灌注量	650	750	850	650	750	850	650	750
Standard fitting of light 照明配置	LED light							
Optional Material for outer decoration 外装饰材质	304 Snowflake / Abrasive Finish Black Titanium / Mirror Stainless steel							
Packing 包装	Plywood Case, no need to be fumigated							
Shipping 装柜数量								
Qty/20'GP	13	10	9	13	10	9	16	13
Qty/40'GP	27	22	19	27	22	19	34	27
Qty/40'HQ	27	22	19	27	22	19	34	27

Optional Refrigerant : R290





台式冰淇淋展示柜 Countertop Showcase Freezer

Key Features

1. High quality imported compressor, Low energy consumption and low noise
采用欧洲进口压缩机，有专利变频技术的电子膨胀阀系统，制冷强劲，节能安静
2. Accurate touch screen digital controller, precisely control the working temperature
高精度轻触式电子温控器，精确控制柜内温度
3. Forced air cooling system ensures effective air circulation
强制风冷循环系统，制冷速度快，温度均匀
4. Hot gas defrost ensures the evaporator working to its optimum performance
Automatic vaporizing the defrosted water
热气化霜系统，化霜水自动蒸发
5. Environment-friendly CFC-free Refrigerant R404a or R290
采用R134a或R290制冷剂，无氟环保
6. Voltage and cycles upon request
电源电压、频率可供客户选择

Royal-Kincool® Showcase Display Collection

Countertop Showcase Freezer

台式冰淇淋展示柜

Technical Data

Model 型号	F-A530V	F-A540V	F-A550V
Temp Range 温度范围	-12~-18 °C		
External Dimension (mm) 外形尺寸			
Width 长	900	1200	1500
Depth 宽	540		
Height 高	790		
Packing Size (mm) 包装尺寸			
Length 长	950	1250	1550
Width 宽	590		
Height 高	940		
Weight (kgs) 重量			
Net weight 净重	108	130	152
Gross weight 毛重	125	151	177
GN pan GN盘			
Quantity 数量	4	5	7
Size 尺寸	32.5*17.6*10cm	32.5*17.6*10cm	32.5*17.6*10cm
Door opening direction 开门方式			
Back sliding door			
Capacity (cu.ft / liters) 容积			
	140	190	240
Power supply 电源			
220~240V/50(110V/60Hz, 220V/60Hz)			
Power Input - Running (amps) 电流			
	2.74	3.84	4.05
Rating Power (watts) 功率			
	378	530	559
Compressor (HP) 压缩机			
	3/8	1/2	1/2
Refrigerant 制冷剂			
Type 类型	R404a	R404a	R404a
Weight (g) 灌注量	520	520	520
Standard fitting of light 照明配置			
	LED 1*10W	LED 1*15W	LED 1*20W
Packing 包装			
Plywood Case, no need to be fumigated			
Shipping 装柜数量			
Qty/20'GP	48	34	26
Qty/40'GP	96	72	58
Qty/40'HQ	96	72	58

Optional Refrigerant : R290



Sushi Bar Collection

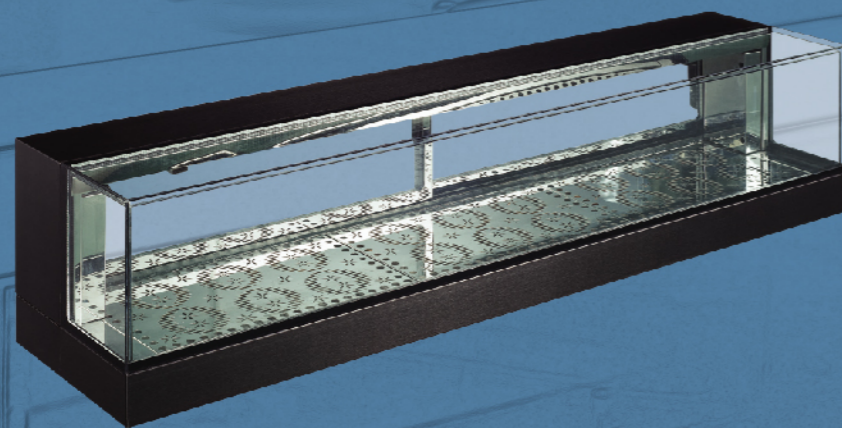
寿司展示柜

Sushi Bar Collection

General Features

寿司展示柜

- 01 • Tilted front glass allows better visual effect of the food.
倾斜式玻璃设计, 增强食品展示效果
- 02 • Removable stainless steel shelf, easy to clean.
可移动不锈钢层板, 清洁, 方便
- 03 • Working Temp.: +2~+8°C
柜内温度2~8°C, 最佳食品保鲜温度
- 04 • Both copper pipe on the top and bottom, cooling fast and evenly
柜顶柜底同时制冷, 冷却均匀



Sushi-R

Royal-Kincool® Sushi Bar Collection

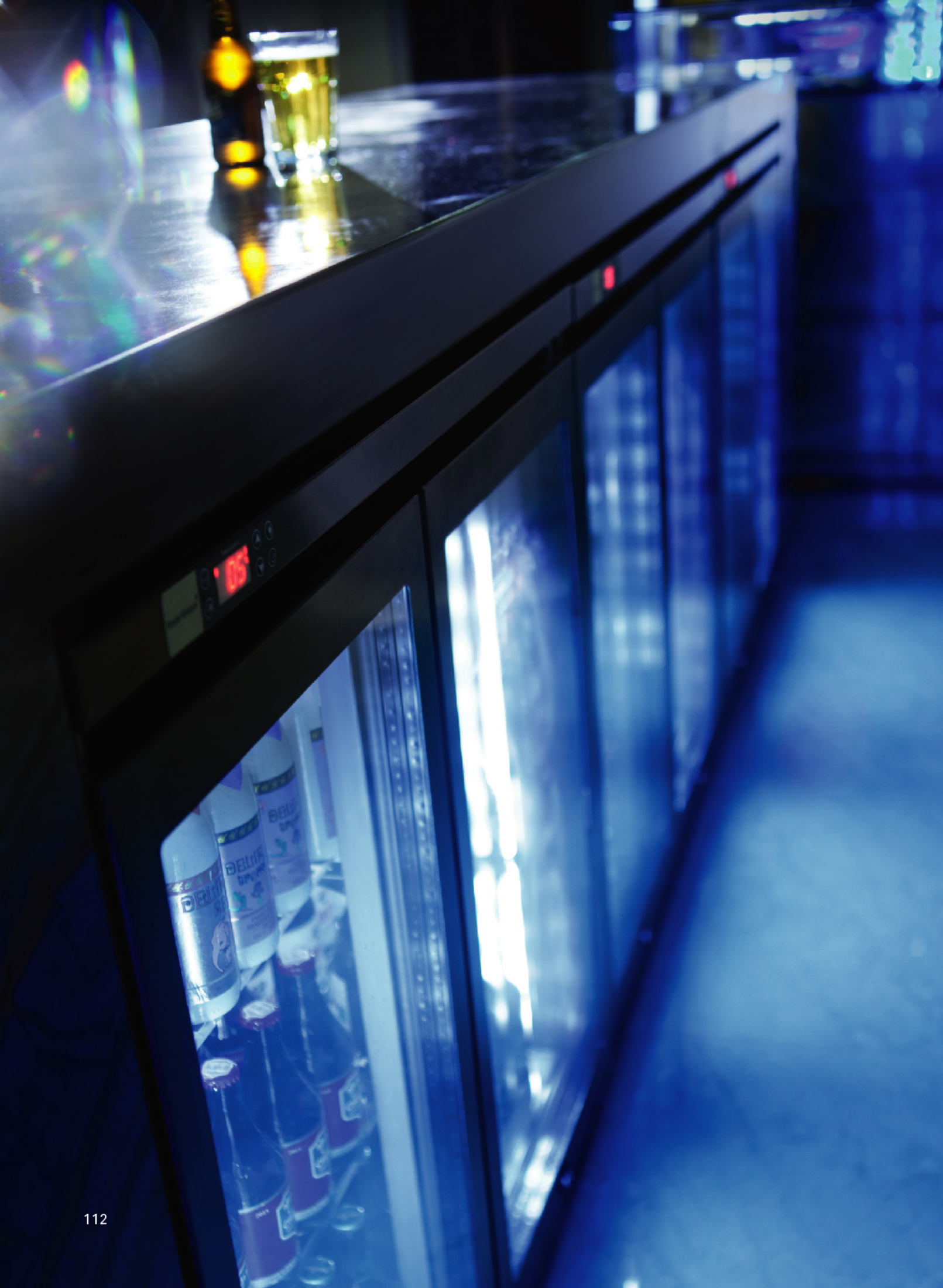
Sushi Bar Collection

寿司展示柜

Technical Data

Model 型号	R100-S	R120-S	R150-S	R180-S	R100-H	R120-H	R150-H	R180-H
Temp Range 温度范围	+4~+8 °C							
External Dimension (mm) 外形尺寸								
Width 长	1000	1200	1500	1800	1000	1200	1500	1800
Depth 宽	350				375			
Height 高	325				675			
Packing Size (mm) 包装尺寸								
Length 长	1060	1260	1560	1860	1060	1260	1560	1860
Width 宽	410				440			
Height 高	500				840			
Weight (kgs) 重量								
Net weight 净重	36+27	44+27	55+27	66+27	70	84	105	126
Gross weight 毛重	36+45	71+45	85+45	96+45	97	111	135	156
Door opening direction 开门方式 Back sliding door								
Capacity (cu.ft / liters) 容积	63	85	106	128	63	85	106	128
Power supply 电源 220~240V/50(110V/60Hz, 220V/60Hz)								
Power Input - Running (amps) 电流	2.5	2.5	2.8	2.8	2.5	2.5	2.8	2.8
Rating Power (watts) 功率	320	320	340	340	320	320	340	340
Compressor (HP) 压缩机 1/3								
Refrigerant 制冷剂								
Type 类型	R134a							
Weight (g) 灌注量	280	280	300	300				
Standard fitting of light 照明配置 white LED light								
Optional Material for outer decoration 外装饰材质								
Snow sand/Titanium/Mirror Stainless steel								
Packing 包装 Plywood Case,no need to be fumigated								
Shipping 装柜数量								
Qty/20'GP	112	88	68	60	54	45	34	30
Qty/40'GP	232	184	148	128	110	92	74	62
Qty/40'HQ	290	230	185	160	165	138	111	93

Optional Refrigerant : R290



Beverage Collection

吧台柜



Beverage Collection

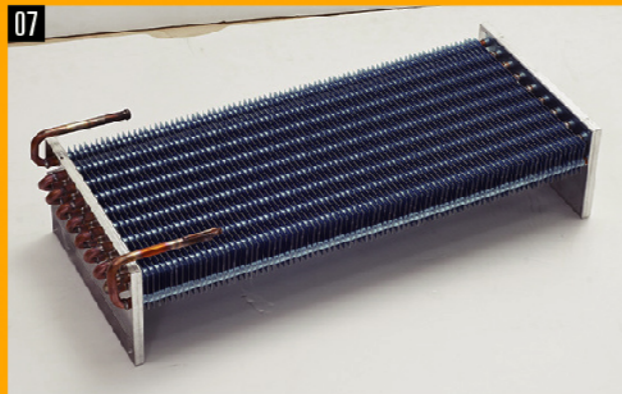
General Features

吧台柜

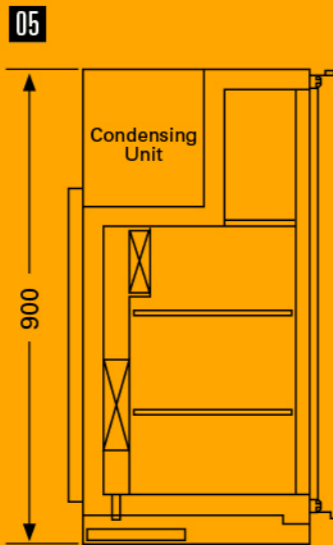
Designed for stylish, effective storage and display of bottles and cans for easy customer selection

专为方便客户的选择而设计，时尚高效地存储展示瓶装和易拉罐饮料

- 01 • LED light in illumination. 选用带开关的低能耗照明灯，展示效果卓越，利于饮料挑选
- 02 • High quality imported compressor 原装进口、耐用、高效节能压缩机
- 03 • Adjustable #304 stainless steel shelves. 可调节式层架
- 04 • Fitted with anti-condensation ITO glass door with stainless steel frame 防凝水中空玻璃门，配不锈钢门框
- 06 • Excellent thermal efficiency, high density polyurethane insulation with Zero ODP (Ozone Depletion Potential) and Low GWP (Global Warming Potential) 采用隔热性能好的高密度聚氨酯环保发泡层
- 08 • Forced air refrigeration system ensures effective air circulation 风冷系统有效保证柜内空气循环
- 09 • Hot gas defrost ensures the evaporator working to its optimum performance 自动除霜，确保蒸发器处于最佳工作状态
- 10 • Automatically vaporises defrost water, drainage is not required 自动蒸发除霜水，不需要排水
- 11 • Environment-friendly CFC-free refrigerant 采用环保制冷剂
- 12 • Designed and engineered to operate from 10 to 32°C ambient 设计使用环境温度10~32°C



- Evaporator with coated fins, provides high corrosion resistance properties 亲水膜蒸发器，具有高耐腐蚀性特性



- Engineered with hidden condensing unit to fit with interior design and minimizing the requested installation space 内置隐藏式冷凝器机组，最大程度地减少所需的安装空间

Royal-Kincool® Beverage Collection

Beverage Collection 吧台柜



Specifications

1. Foodsafe 304 grade stainless steel exterior and 304 grade BA mirror stainless steel interior
2. Galvanised steel exterior back and base
3. Fitted with cylindrical lock

1. 外板304不锈钢，内板304 BA镜面不锈钢
2. 背板和底板镀锌板
3. 圆形锁

Options

1. 304 grade stainless steel exterior back/ base
2. Black colour bond exterior/ back
3. 15mm table top for hidden the door hinge screw
4. 304 grade stainless steel door
5. 220V/60HZ/1PH, 110V/60HZ

1. 背板和底板可采用304不锈钢
2. 外部和背部黑钛砂
3. 加宽15mm的台面藏着门铰链螺丝
4. 304发泡门
5. 电源电压可选



Back Bar Cooler

(Wall Mounted Type)
挂墙式吧台饮料柜



M-ASS8G2

Under Bar Cooler

台底式吧台饮料柜



M-ASS9L1



M-ASS9L2



M-ASS9L3

Beverage Collection

吧台饮料柜

Technical Data

Model 型号	M-ASS9L1	M-ASS9L2	M-ASS9L3	M-ASS8G2
Temp Range 温度范围	+4~+10 °C			
External Dimension (mm) 外形尺寸				
Width 长	600	900	1350	900
Depth 宽	520			
Height 高	900			850
Internal Dimension (mm) 内部尺寸				
Width 长	520	820	1270	820
Depth 宽	315			
Height 高	715			665
Thickness of 304 grade stainless steel (mm) #304不锈钢厚度				
Exterior 外部	0.7			
Interior 内部	0.7			
Door 门	0.7			
Open Depth (mm) 开门深度	1070			
Maximum loading height of shelves (mm per shelf) 层板最高承载高度				
Upper shelf 上层板	230			155
Middle shelf 中层板	230			260
Bottom shelf 底层板	230			260
Capacity (cu.ft / liters) 容积	93	160	262	147
Power supply 电源	220V/50HZ(220V/60HZ, 110V/60HZ)			
Power Input - Running (amps) 电流	1.1	1.2	1.3	1.2
Rating Power (watts) 功率	221	249	287	249
Compressor (HP) 压缩机	1/5	1/5	1/4	1/5
Refrigerant 制冷剂				
Type 类型	R134a			
Weight (g) 灌注量	185	200	300	200
Standard fitting for door type 门式标准配件				
PE coated shelves 浸塑网架	2	4	4	4
K-type Clamp (pcs) K型夹	8	16	24	16
Packing 包装	Plywood Case, no need to be fumigated			
Packing Size (mm) 包装尺寸	660*580*1080	960*580*1080	1410*580*1080	960*580*1025
Shipping 装柜数量				
Qty/20'GP	60	44	28	44
Qty/40'GP	120	88	56	88
Qty/40'HQ	120	88	56	88

Optional Refrigerant : R290